

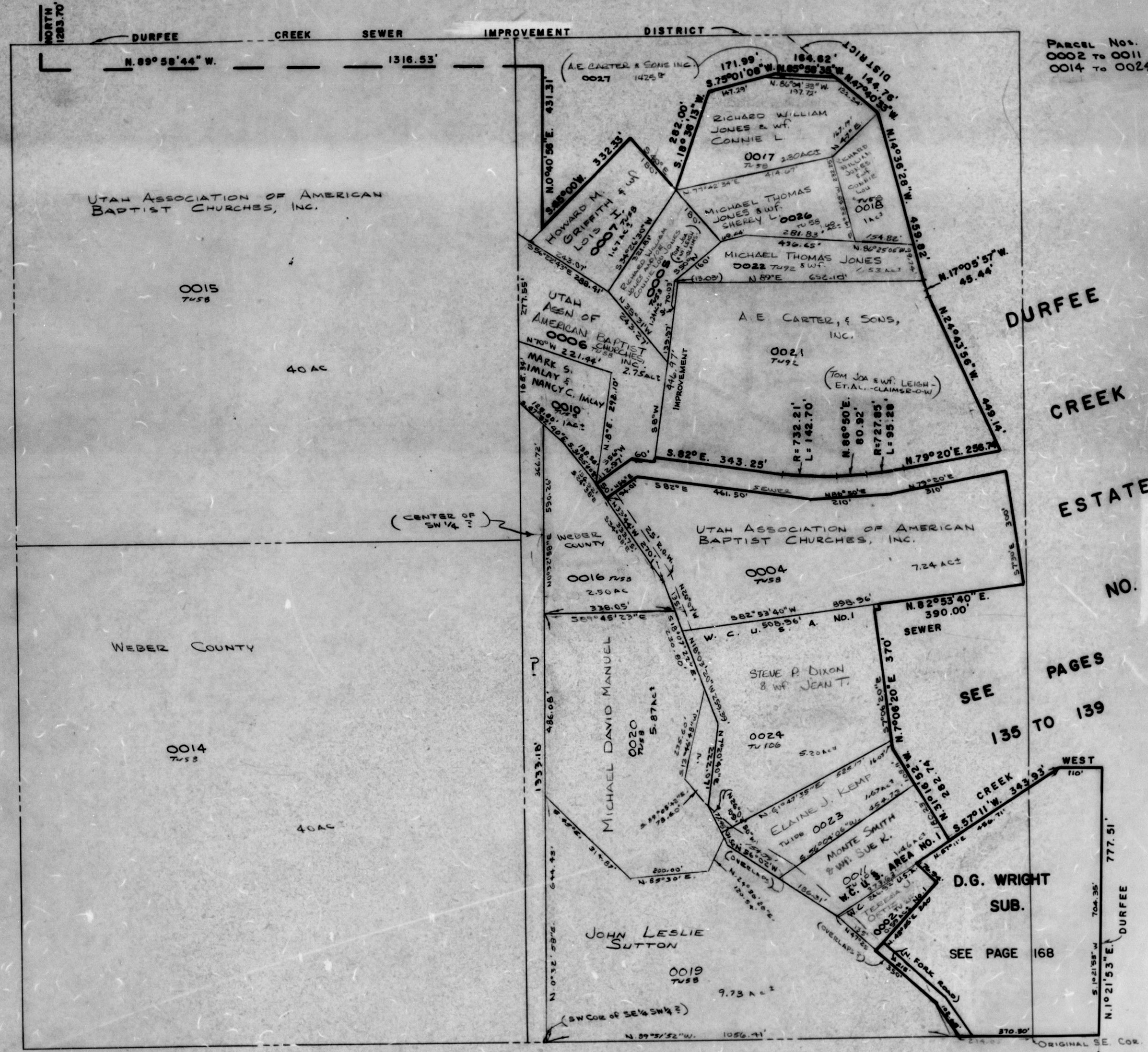
S.W. 1/4  
SECTION 36, T.8N., R.1W., S.L.B.&M.

NORTH OGDEN DISTRICT

TAXING UNIT: 58, 92, 106, 210

SCALE 1" = 200'

PREFIX: 17-092



PARCEL Nos.  
0002 to 0011  
0014 to 0024

SEE P. 91

SEE PAGES  
135 TO 139

D.G. WRIGHT  
SUB.  
SEE PAGE 168

SEE BOOK 16, P. 1

{ THIS SE COR BASED ON CHANGE OF LOCATION RECORDED  
IN BOOK 927, P. 542; COURT ORDER RECORDED IN BOOK  
1020, P. 509; DECREE RECORDED IN BOOK 1040, P. 521. }

N 89° 14' 30" E.  
125.21'